

Short Report



Outside view of the Meistersaal at Potsdamer Platz | ©Peer Kugler

Meistersaal at Potsdamer Platz

Köthener Straße 38
10963 Berlin

Tel: +49 30 325 999 71 0
Fax: +49 30 325 999 71 3

info@besl-eventagentur.de
<https://www.meistersaal-berlin.de/>

Welcome!

Meistersaal at Potsdamer Platz – the BESL event location.

With old-Berlin charm, elegant ambiance, and a trendy lounge and club atmosphere, the Meistersaal provides the perfect setting for events of all kinds. It's not just a place to celebrate and hold meetings – history has been made here, with music legends such as David Bowie, Depeche Mode, and U2 leaving their mark. Since 2003, the hall has been operated by the BESL event agency, delivering unforgettable experiences.

TEST RESULT

for

Meistersaal am Potsdamer Platz

10963 Berlin, Certificate-ID: PA-14165-2024



This offer was classified according to
the criteria of the nationwide label

»Tourism for All«

and, in the period from

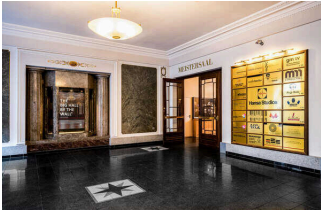
December 2024 – November 2027

is entitled to use the label

»Accessibility checked«

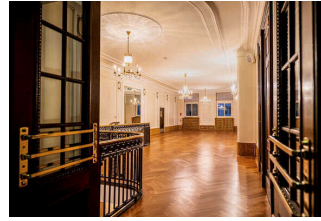
and the associated pictograms

in accordance with the contract.



Foyer on the lower ground floor –
Meistersaal at
Potsdamer Platz

©Peer Kugler



Wandelhalle at
Meistersaal at
Potsdamer Platz

©Peer Kugler



Meistersaal at
Potsdamer Platz

©Peer Kugler



Meistersaal at
Potsdamer Platz

©Dirk Linnerz

Overview

- The soul of Berlin's (music) history since 1913
- Magnificent backdrop for events of all kinds
- Neoclassical Meistersaal for up to 300 people
- Green Salon with permanently installed counter as the bar of the Meistersaal
- Wandelhalle for up to 120 people
- Small smoking lounge

Accessibility at a glance

- Building steplessly accessible via mobile ramp
- All rooms and facilities that can be used by guests and are elevated are accessible without steps or via an elevator
- 73 cm minimum width of all passages/doors
- WC for people with disabilities (ladies and gentlemen)
- Assistance dogs welcome

Information for people with walking difficulties and wheelchair users

All areas relevant for testing meet the quality criteria of the label "**Accessibility certified – partially accessible for people with walking disabilities**".

Some **information on accessibility** are listed below. For detailed information please see the evaluation report.

- The Potsdamer Platz S-Bahn and U-Bahn station is approx. 350 m away.
- Entrance to the building is possible via a step or alternatively via a mobile ramp.
- All rooms and facilities that can be used by guests are accessible without steps or via an elevator. The elevator can only be used with the service staff.
- All doors/passages and paths that can be used by guests are at least 73 cm wide.
- Seating is available in the halls depending on the event.
- There is a public toilet for men and women with disabilities, which can be accessed from one side (50 cm). There is a folding grab rail on the accessible side of the toilet.

Information for people with hearing impairments and deaf people

Some **information on accessibility** are listed below. For detailed information please see the evaluation report.

- There is no audio induction loop system available.
- Wi-Fi is available.
- Seating is available in the halls depending on the event.

Information for visually impaired and blind people

Some **information on accessibility** are listed below. For detailed information please see the evaluation report.

- Assistance dogs are welcome.
- The signage (for orientation) is designed in easy-to-read, high-contrast lettering.
- All areas are brightly lit and glare-free.

- The stairs to the halls have handrails on both sides. The first and last steps of the stairs do not have horizontal and vertical contrasting edges.
- Depending on the event, seating is available in the halls.
- Information is not available in Braille or prismatic writing.

Information for guests with cognitive impairments

Some **information on accessibility** are listed below. For detailed information please see the evaluation report.

- The name of the Meistersäle is clearly recognizable from the outside.
- The destinations of the routes are within sight or there are route signs at a visible distance.

Image Gallery

We have put together some photos from the company / offer for you. You can find more photos in the detailed reports.



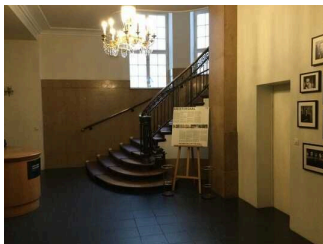
Entrance

©Marina Rochel



Entrance

©Marina Rochel



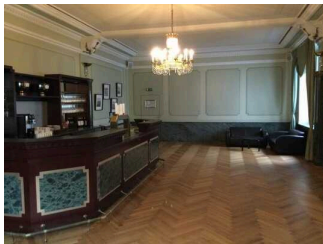
Foyer and wardrobe

©Marina Rochel



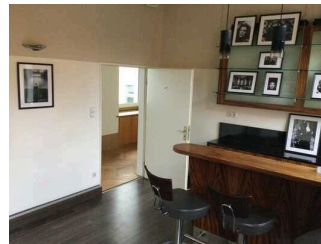
Halls (1st floor)

©Marina Rochel



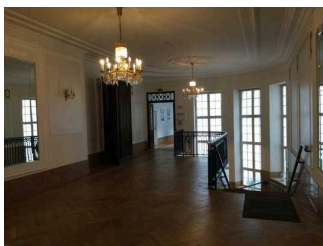
Halls (1st floor)

©Marina Rochel



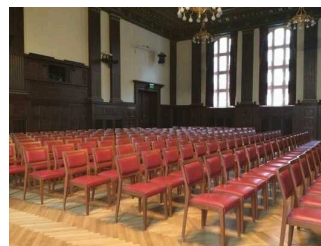
Halls (1st floor)

©Marina Rochel



Halls (1st floor)

©Marina Rochel



Halls (1st floor)

©Marina Rochel



Public toilet

©Marina Rochel



Public toilet

©Marina Rochel

Information on the "Tourism for All" labeling system

All establishments and locations certified with the label "Tourism for All" meet the following quality criteria:

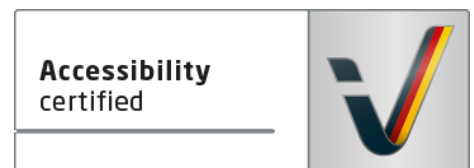
- Data and information on accessibility are collected and checked on site by **external, specially trained evaluators**. The method is not based on self-assessments.
- Data on accessibility is available **in detail** and can be viewed by the guests.
- At least one staff member has successfully passed a **training** on "**Accessibility as a comfort and quality feature**".

The labeling – explanation of the logos and pictograms

The label "**Information about Accessibility**" indicates that detailed and verified information on accessibility is available for all groups of people.



The label "**Accessibility certified**" is based on "Information about Accessibility". It means that the quality criteria defined for specific groups of people are met partially or completely.



The label "**Accessibility certified**" is available in two requirement levels:

"Accessibility certified: partially accessible".

The quality criteria are partially fulfilled for the pictured group of people, i.e. the establishment/location is partially accessible for wheelchair users. The "i" in the pictogram indicates that it is recommended to read again carefully whether the offer meets all (your oder the guest's) individual requirements.



"Accessibility certified: accessible".

The quality criteria are fulfilled for the pictured group of people, i.e. the establishment/location is accessible for wheelchair users.



There are defined quality criteria for **seven groups of people** and a **specific pictogram** for each group.

People with walking disabilities



Wheelchair users



People with hearing impairment



Deaf people



People with visual impairments



Blind people



People with cognitive impairments

